



FOUNDATION FORUM

SUMMER 2025



VERMILLION COUNTY
COMMUNITY FOUNDATION

MEET OUR BOARD OF DIRECTORS

We'd like to know you better, and we want you to know us, too.

Our Board of Directors is deeply committed to the vision of stimulating philanthropy to build a better community. They generously contribute their time and talents to ensure that the Community Foundation grows and prospers so that Vermillion County can benefit, forever.

Individuals with an asterisk (*) beside their name also serve on the Finance Committee. Additional Finance Committee Members include Dale Brown, Jack Fenoglio, Lou Fenoglio, Amy Hay, and Rick Morgan

BOARD MEMBERS

Ed Shew – President
Oren “Doc” Sutherlin – Vice President
Nancy Reed – Secretary
Larry Lynn* – Treasurer
Jeff Clark
Kay Hicks
Hannah Hoover
Mary Margaret Rhees
Mark Wilson

STAFF

Dale White – Chief Executive Officer
Nikki Cheuvront – Director of Finance
Kim Eaton – Director of Community Engagement
(Grants & Scholarships)
Taylor Marshall – Director of Marketing & Communications
Laura Hacquet – Office Assistant



VERMILLION COUNTY
COMMUNITY FOUNDATION



Explore Vermillion County, a website (www.explorevermillioncounty.org) by the Vermillion County Community Foundation, offers visitors an immersive and inspiring look into what awaits them on a Vermillion County visit. Visits to the site will make it easier than ever for travelers to discover activities, events, places to eat, drink, and stay overnight in Vermillion County.

Check it out and let us know your thoughts!



FROM THE CEO'S DESK



Fostering Growth: A Look at Our Achievements Together

Over the past six months, your generosity has profoundly shaped our community. With your support, we've provided critical funds to nonprofits, empowered students with scholarships, and spearheaded leadership initiatives. Additionally, the creation of new endowment funds ensures a long-lasting legacy for future generations.

Strengthening Our Community through Targeted Grants

Your contributions have fueled grants that uplift local nonprofit organizations and community-driven projects. These funds have gone toward programs addressing key community needs, ranging from youth engagement and educational opportunities to vital social services. Together, we've amplified their ability to make a transformative impact on countless lives.

(For more details, see pages 6-10.)

Opening Doors to Higher Education through Scholarships

Thanks to your unwavering support, bright and deserving students now have access to the resources they need to pursue their dreams. Each scholarship you've helped provide is not only a step forward for an individual, but a leap toward a brighter and more prosperous community.

(Visit www.wicf-inc.org/scholarships to see this year's recipients.)

Guiding the Future with Leadership Initiatives

Our efforts in community leadership have been pivotal in identifying and addressing pressing needs. Through surveys and forums, we've gathered valuable insights from local voices, enabling us to tailor our strategies and maximize our collective impact.

Laying the Foundation for Tomorrow: Endowment Funds

Endowment funds are the backbone of sustained community support. Because of your generosity, we've successfully launched five new funds, designed to provide perpetual support for key initiatives.

(Turn to pages 12-14 for highlights on these impactful new funds.)

A Heartfelt Thank You for Joining Us

Your incredible generosity continues to pave the way for meaningful change in our community. Together, we're building a brighter, stronger future, one step at a time. Thank you for being an integral part of our journey—we can't wait to see what we'll accomplish next!

All my best,

Dale A. White
Chief Executive Officer

"Helping People Improve Our Community"

SCHOLARSHIP NEWS

This year, we'll be distributing **\$50,000 in scholarships** to about **40 students** across our communities.

These scholarships come from more than **30 different funds**, each one created by donors who want to make a difference. Awards vary in size—from **\$500** to **full tuition and fees**—and no two scholarships are exactly the same.

Some focus on:

- **Financial need**
- **Community service or volunteer work**
- **Specific career or study goals**
- **High academic achievement (GPA)**

Most are designed for graduating high school seniors, but we also offer scholarships for students who are already in college. You can check out a list of this year's recipients on our website at www.wicf-inc.org.

THINKING ABOUT STARTING A SCHOLARSHIP? WE CAN HELP!

Are you—or someone in your family—thinking about starting a scholarship fund? Whether it's to honor a loved one, support a cause, or invest in the future of your community, WICF offers full-service support to help you make it happen.

We'll guide you through:

- Choosing your scholarship criteria
- Promoting it to students
- Following all legal guidelines
- Sharing helpful financial aid information with families

And we handle all the behind-the-scenes work:

- Application management and processing
- Reviewing applications and selecting winners
- Notifying applicants
- Sending out award payments
- Managing renewals
- Tracking student progress
- Promoting your scholarship each year
- Investing funds to help them grow over time

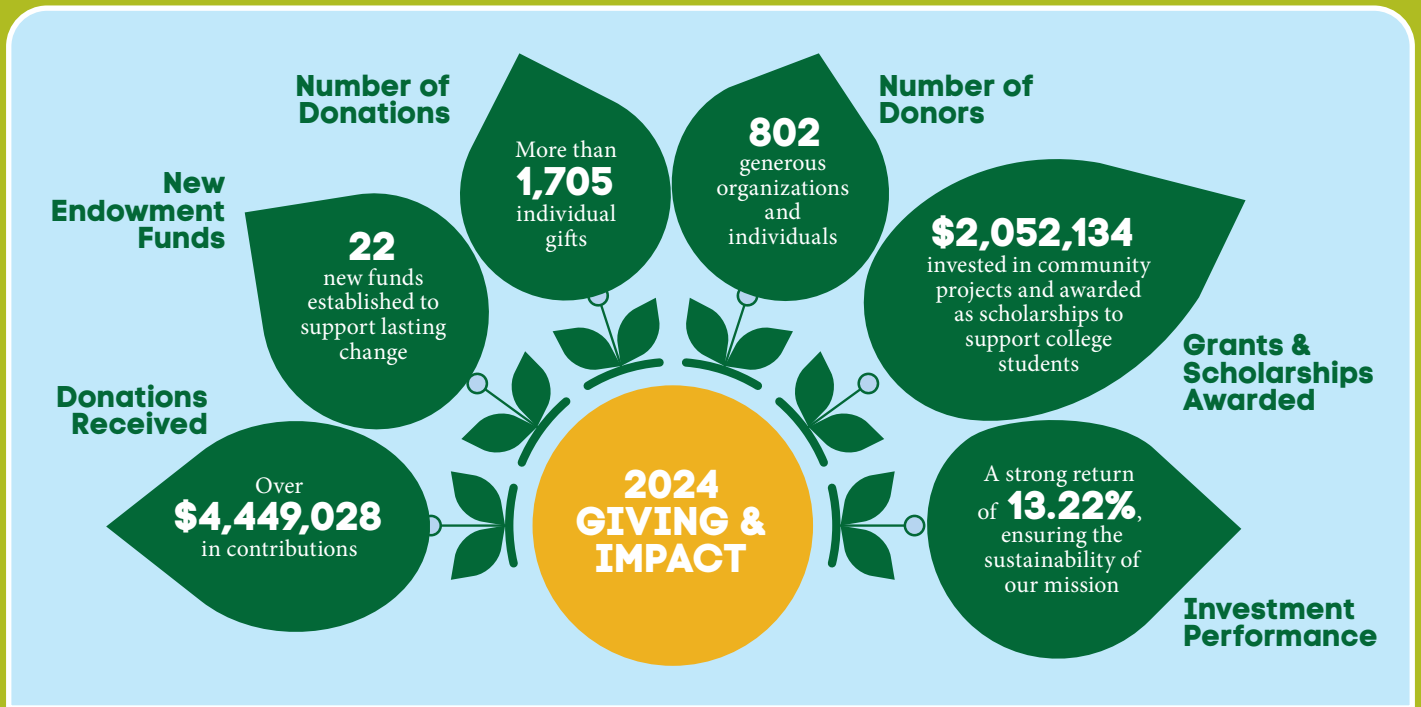


WANT TO LEARN MORE?

If you're a student, donor, or just curious about scholarships in our area, we'd love to talk. Call us at **(765) 793-0702** to set up a free consultation—no pressure, just helpful information.

FINANCIALS AT A GLANCE

As we reflect on 2024, we're overwhelmed with gratitude for the generosity and support of our donors and partners. Together, we accomplished incredible milestones:



Your support has made a difference in countless lives, and we're excited to build on this impact in 2025. Thank you for being a vital part of our mission to Help People to Improve Our Community!

Did you know that the following were the Foundation's investments returns for the following 1, 3, 5, 7 and 10 year periods?

Year-to Date (3/31/2025): .03%

- ▶ 1-Year (2024): 13.22%
- ▶ 3-Year (2022-2024): 6.98%
- ▶ 5-Year (2020-2024): 9.82%
- ▶ 7-Year (2018-2024): 9.11%
- ▶ 10-Year (2015-2024): 8.55%



The Foundation focuses on protecting the original donations it receives so they can support the community for years to come. Most donations (except pass-through funds) are invested, and the earnings from those investments are given out each year as grants to charities, scholarships for students, or other causes chosen by the donor.

Many donors set up special funds called Unrestricted or Community Funds. These funds allow the Foundation to decide how to use the earnings to best support local needs. Right now, the Foundation manages more than 14 of these funds (out of 90 total), and they generate over \$100,000 each year for community projects.

Want to make a difference that lasts? Visit our website at www.wicf-inc.org or call (765) 793-0702 to learn how you can leave a lasting legacy in your community.

GRANTS AWARDED

Several nonprofit and charitable organizations shared in grants from the Vermillion County Community Foundation. Grant monies are made available by donations from caring individuals who want to make a difference by improving the quality of life of others.

Community Action Program of Western Indiana - \$3,400 to help families obtain the resources they need to provide a safe environment for their children based on the Home Safety Checklist



Community Action Program of Western Indiana
(Left to right) Natasha Owen, Fountain County Early Head Start Family Advocate - Community Action Program of Western Indiana; Elly Benjamin, Fountain County Early Head Start Home Visitor - Community Action Program of Western Indiana; Toni McGowen, Early Head Start Family Services Specialist - Community Action Program of Western Indiana; Oren "Doc" Sutherlin, Board Member - Vermillion County Community Foundation; Kim Eaton, Director of Community Engagement - Vermillion County Community Foundation

Vermillion County 4-H - \$500 to be a "Gold Clover" sponsor

North Vermillion Falcon Fund - \$250 to support the 2nd annual Men's Nostalgia Basketball Tournament

Valley Professionals - \$250 sponsorship for Trivia Night

South Vermillion High School - \$1,000 to support SVHS Academic Teams, including the spell bowl team, quiz bowl team, and academic super bowl teams



South Vermillion High School (Left to right) Karalyn Skinner, Principal - South Vermillion High School; Kim Terry, Academic Super Bowl Sponsor - South Vermillion High School; Oren "Doc" Sutherlin, Board Member - Vermillion County Community Foundation; Larry Lynn, Board Member - Vermillion County Community Foundation

North Vermillion High School - \$1,000 for the 2024 Fall Academic Honors Program, which honors North Vermillion Junior/Senior High School students who have achieved exceptional honor roll (3.8 GPA) and high honor roll (3.67 GPA) during the 2024 school year



North Vermillion High School (Left to right) Kim Britton, Assistant Principal - North Vermillion High School; Melanie Bean, Guidance Counselor - North Vermillion High School; Kay Hicks, Board Member - Vermillion County Community Foundation; Monty Kirk, Principal - North Vermillion High School

Fountain County Old Guard 2395 - \$4,000 for a digital sign that will be used to advertise community events at the VFW in Covington



Fountain County Old Guard (Left to right)
 Jeremy Claypool, Post Commander - Fountain County Old Guard 2395; Craig Stalter, Auxiliary President - Fountain County Old Guard 2395; Judy Hegg, Auxiliary Treasurer - Fountain County Old Guard 2395; Nancy Wagner, Fundraiser Coordinator - Fountain County Old Guard 2395; Bob Cates, Post Quartermaster - Fountain County Old Guard 2395

South Vermillion High School - \$2,850 to help purchase reusable LEGO spike prime kits, which allow Robotics students to build robots to solve presented problems



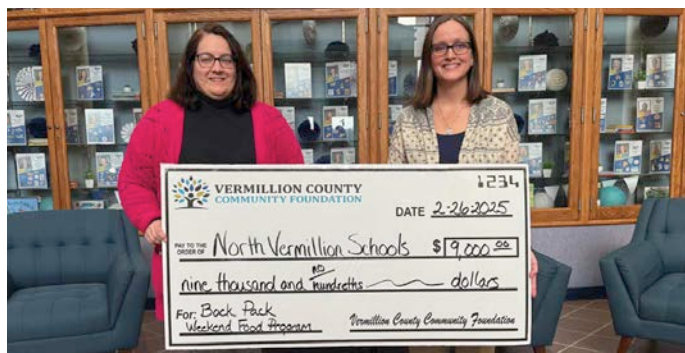
South Vermillion High School (Left to right)
 Karalyn Skinner, Principal - South Vermillion High School; Heather Scott, Computer Science Teacher - South Vermillion High School; Kim Eaton, Director of Community Engagement - Vermillion County Community Foundation; Larry Lynn, Board Member - Vermillion County Community Foundation; Oren "Doc" Sutherlin, Board Member - Vermillion County Community Foundation

Clinton Lions Club - \$3,500 to purchase a mobile camera used for annual vision screenings in preschools and schools across Parke, Vermillion, and occasionally Fountain County



Clinton Lions Club (Left to right)
 Oren "Doc" Sutherlin, Board Member - Vermillion County Community Foundation; Larry Lynn, Board Member - Vermillion County Community Foundation; Nancy Reed, Board Member - Vermillion County Community Foundation; Dave Marietta, President - Clinton Lions Club; Garry Dal Sasso, Chairman - Clinton Lions Club; Tim Foltz, Member - Clinton Lions Club; Larry Rardin, Board Member - Clinton Lions Club; Bob Spence, Member - Clinton Lions Club

North Vermillion Community Backpack Program - \$9,000 to provide and serve weekend sacks of food items for approximately 63 children throughout the school year



North Vermillion Community Backpack Program (Left to right) Kim Eaton, Director of Community Engagement - Vermillion County Community Foundation; Karalyn Porter, Principal - North Vermillion Elementary School

(continued on page 8)

GRANTS AWARDED *(continued from page 7)*

Vermillion County Reserves - \$20,000 for body-worn cameras for the Vermillion County Reserve Deputies



Vermillion County Reserves (Left to right) (front) Kay Hicks, Board Member - Vermillion County Community Foundation; Larry Lynn, Board Member - Vermillion County Community Foundation (back) Jon Spurr, Chief of Reserves - Vermillion County Reserves; Brian Strohm, Reserve Deputy - Vermillion County Reserves; Jimmy Miller Jr., Reserve President - Vermillion County Reserves; John Benton, Reserve Board of Directors - Vermillion County Reserves

South Vermillion High School - \$2,500 for the WILDCAT 400 “Racing Towards Success” Career Day that will allow students in grades 9-12 to explore the many career opportunities available to them upon high school graduation



South Vermillion High School (Left to right) Larry Lynn, Board Member - Vermillion County Community Foundation; Karalyn Skinner, Principal - South Vermillion High School; Mylinda Scifries, Guidance Counselor - South Vermillion High School; Ed Shew, President - Vermillion County Community Foundation

Cayuga Christian Church - \$1,000 for Thanksgiving baskets



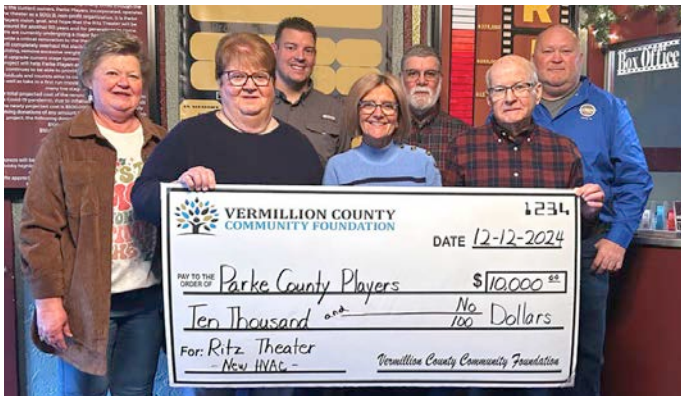
Cayuga Christian Church (Left to right) Kay Hicks, Board Member - Vermillion County Community Foundation; Kim Bailey, Finance Coordinator - Cayuga Christian Church; Nikki Cheuvront, Director of Finance - Vermillion County Community Foundation

Black Diamond Fire Department - \$6,103 for new AEDs (automatic external defibrillators)



Black Diamond Fire Department (Left to right) Dakota Wilson, Chief - Black Diamond Fire Department; Ed Shew, President - Vermillion County Community Foundation; Kim Eaton, Director of Community Engagement - Vermillion County Community Foundation

Parke Players Ritz Theatre - \$10,000 to replace the heating and cooling system in the historic theater



Parke Players Ritz Theatre (Left to right) (Front row) - Nancy Thomas, Board President - Parke Players; Kay Hicks, Board Member - Vermillion County Community Foundation; Larry Lynn, Board Member - Vermillion County Community Foundation
(Back row) - Mary Wicker, Board Vice President - Parke Players; Zach McCain, Board Member - Parke Players; Ed Shew, President - Vermillion County Community Foundation; Jeff Clark, Board Member - Vermillion County Community Foundation

NV Robotics - \$1,000 to support students enrolled in Wabash River Career and Technical Education (WRCTE) Robotics programs to compete in competitions



NV Robotics (Left to right) (Front row) - Paxton Rudisel, Titus Hammer, Ian Farley, Kayne Acton, Cody Waggle, Alexander Larson - Students from the Wabash River Career and Technical Education (WRCTE) Engineering and Automation Class
(Back row) - Brody Goodrich, Andrew Thom, Owen Hazelwood, Grissom Cope, Andrew Maquet, Cotton Cordova - Students from the Wabash River Career and Technical Education (WRCTE) Engineering and Automation Class

Friends of Ernie Pyle - \$50,000 for improvements to the park at the Ernie Pyle Museum



Friends of Ernie Pyle (Left to right) Becky Holbert, Secretary - Friends of Ernie Pyle; Doug Hess, Vice President - Friends of Ernie Pyle; Max Jones, Board Member - Friends of Ernie Pyle; Kim Eaton, Director of Community Engagement - Vermillion County Community Foundation

Vermillion County Soil & Water Conservation District - \$2,500 to bring a mobile educational exhibit to Vermillion County that will allow visitors to explore the importance of water conservation and environmental stewardship



Vermillion County Soil & Water Conservation District (Left to right) Kim Eaton, Director of Community Engagement - Vermillion County Community Foundation; Eric Shideler, Conservation Director - Vermillion County Soil & Water Conservation District; Taylor Marshall, Director of Marketing and Communications - Vermillion County Community Foundation

(continued on page 10)

GRANTS AWARDED *(continued from page 9)*

Helt Fire & Rescue - \$5,000 for rescue struts



Helt Fire & Rescue (Left to right)

Kim Eaton, Director of Community Engagement - Vermillion County Community Foundation; Scott Peebles, Fire Chief - Helt Fire & Rescue; Bobby Phillips, Firefighter EMR - Helt Fire and Rescue

Parke Vermillion Retired Teachers - \$734 to provide Vermillion County kindergarten students with a book to take home and to add additional books to classroom libraries



Parke Vermillion Retired Teachers (Left to right)

Nancy Reed, Board Member - Vermillion County Community Foundation; Kim Eaton, Director of Community Engagement - Vermillion County Community Foundation; Adrienne Gideon, President - Parke Vermillion Retired Teachers

Catholic Charities Terre Haute Food Bank - \$7,500 to expand Mobile Pantry services in Vermillion County, providing more households with access to fresh, nutritious food



Catholic Charities Terre Haute Food Bank (Left to right)

Kim Eaton, Director of Community Engagement - Vermillion County Community Foundation; Jennifer Tames, Assistant Agency Director - Catholic Charities Terre Haute; Levi Adams, Director - Catholic Charities Terre Haute

North Vermillion High School - \$2,500 for the College and Career Fair at North Vermillion High School



North Vermillion High School (Left to right)

Kim Britton, Assistant Principal - North Vermillion High School; Hilary Gibson, Guidance Registrar - North Vermillion High School

Donations to the Community Fund can be made online at www.wicf-inc.org or mailed to *Vermillion County Community Foundation, ATTN: Community Fund, P.O. Box 532 / 259 Vine St., Clinton, IN 47842-0532.*

NEW GRANT GUIDELINES

The VCCF Board of Directors plays a vital role in ensuring the Foundation's grants have the greatest possible impact on our community. Most grants are funded through Unrestricted Funds, which address a wide range of community needs. Depending on the grant size, applications are reviewed monthly, quarterly, or semi-annually. Each application undergoes thorough evaluation and research by the respective Board and VCCF staff. It is important to note that each affiliate within VCCF maintains its own funds for grantmaking.

To better serve our community and ensure a fair and efficient review of grant requests, we have transitioned our 2025 grant application and review process to a structured three-tiered grant cycle process. This involves new grant applications and review processes.

The new grant cycles are:

Rapid Response Grants

(Grants less than \$2,500)



- ▶ Applications are reviewed monthly.
- ▶ Applications Due: 15th of each month
- ▶ Review Period: Month following the application deadline
- ▶ Notification of Award: Same month as review

Impact Grants

(Grants \$2,500-\$7,500)



- ▶ Applications are reviewed quarterly.
- ▶ Applications Due: January 15, April 15, July 15, October 15
- ▶ Review Period: February, May, August, November
- ▶ Notification of Award: March, June, September, December

**We recommend a conversation with staff to discuss your project before submitting your application if applying for a grant between \$2,500-\$7,500.*

Legacy Grants

(Grants \$7,501+)



- ▶ Applications are reviewed semi-annually.
- ▶ Submit a letter of intent by: February 15, August 15
- ▶ Applications Due: April 15, October 15
- ▶ Review Period: May, November
- ▶ Notification of Award: June, December

**Submit a letter of intent.*

**A presentation to the Board of Directors of the respective Foundation affiliate and staff is required.*

NEW FUNDS

The endowment funds listed below have recently been established by local organizations, businesses, and/or caring citizens. Any individual, business, or organization can establish a fund and/or contribute to an existing fund at any time.

Donations made to these endowment funds are invested and a portion of the earnings is used to award grants to community organizations and/or to award scholarships to students for their post-high school education. Donations can be made in a variety of forms including gifts of cash, stock, real estate, life insurance, and charitable bequests.

Endowment funds can be established in honor or memory of loved ones for as little as \$1,000. Payouts (“distributions”) from endowment funds begin when the fund has reached \$10,000 in cumulative donations and has been invested for one full calendar year.

Here is a listing of the most recent endowment funds established through the *Vermillion County Community Foundation*.



RICHARD A. & SUE A. REED UNRESTRICTED FUND

Richard and Sue are interested in supporting innovative and creative problem-solving projects that have the potential to make a significant long-term impact in Vermillion County and, in particular, their hometown of Clinton, Indiana.

The projects may be in a wide variety of areas, including, but not limited to: education, health and wellness, economic improvement, community leadership development, park and recreation ventures, child and youth activities, senior citizen endeavors, school-based initiatives, visitors and tourism promotion, and others.

Donations to this fund will be matched \$2:\$1.

Contributions for the Richard A. & Sue A. Reed Unrestricted Fund are tax deductible and can be made online at www.wicf-inc.org or mailed to: *Vermillion County Community Foundation, ATTN: Richard A. & Sue A. Reed Unrestricted Fund, PO Box 532, Clinton, IN 47842.*

PARKE-VERMILLION HUMANE SOCIETY FUND

The Parke-Vermillion Humane Society Fund has been established to provide crucial support for the day-to-day operations of the Parke-Vermillion Humane Society. This fund will also assist with remodeling or building improved facilities to better care for animals in need. This fund ensures that the Humane Society has resources not only to care for animals today but also to grow and improve its facilities in the future.



Contributions to the Parke-Vermillion Humane Society Fund are tax deductible and can be made online at www.wicf-inc.org or mailed to: *Vermillion County Community Foundation, ATTN: Parke-Vermillion Humane Society Fund, PO Box 532, Clinton, IN 47842.*



MERRY AND LARRY ADDISON FAMILY COMMUNITY FUND

The Addisons share a deep-rooted connection to Vermillion County, shaped by their dedication to hard work, healthcare, and family. As retired ER nurses, Larry and Merry devoted more than 40 years to the nursing profession, where they developed a strong compassion for helping others. Through this fund, they aim to create opportunities for those in need and strengthen the community they love.

The projects may be in a wide variety of areas, including, but not limited to: education, health and wellness, economic improvement, community leadership development, park and recreation ventures, child and youth activities, senior citizen endeavors, school-based initiatives, visitors and tourism promotion, and others.

Donations to this fund will be matched \$2:\$1.

Contributions to the Larry & Merry Addison Family Community Fund are tax deductible and can be made online at www.wicf-inc.org or mailed to: *Vermillion County Community Foundation, ATTN: Larry & Merry Addison Family Community Fund, PO Box 532, Clinton, IN 47842.*

RON AND SHIRLEY HINTON SCHOLARSHIP FUND

The Ron and Shirley Hinton Scholarship will be awarded to a South Vermillion High School graduate who resides in Vermillion County and demonstrates both financial need and academic excellence. While the recipient will be selected during their senior year of high school, the scholarship payment will be deferred until the student's sophomore year of college. To receive the funds, the student must remain in good standing with their college or university and meet GPA and other academic requirements.



Ron and Shirley Hinton, proud graduates of Clinton High School, understand both the value of education and the obstacles many students encounter along the way. Their lives have been shaped by a commitment to learning, hard work, and helping others. The Vermillion County Community Foundation is proud to partner with them in introducing the Ron and Shirley Hinton Scholarship.

Contributions to the Ron and Shirley Hinton Scholarship Fund are tax deductible and can be made online at www.wicf-inc.org or mailed to: *Vermillion County Community Foundation, ATTN: Ron and Shirley Hinton Scholarship Fund, PO Box 532, Clinton, IN 47842.*

(continued on page 14)

NEW FUNDS *(continued from page 13)*

AUSTIN & MARTHA REED AND HAROLD & DOROTHY SHORT UNRESTRICTED FUND

The Austin & Martha Reed and Harold & Dorothy Short Unrestricted Fund has been established by Richard A. & Sue A. Reed in memory of their parents to support innovative and creative problem-solving projects in Vermillion County.

The projects may be in a wide variety of areas, including, but not limited to, education, health and wellness, and economic improvement, community leadership development, park and recreation ventures, child and youth services, senior citizen endeavors, school-based initiatives, visitors and tourism promotion, and others.

Donations to this fund will be matched \$2:\$1.

Contributions to the Austin & Martha Reed and Harold & Dorothy Short Unrestricted Fund are tax deductible and can be made online at www.wicf-inc.org or mailed to: *Vermillion County Community Foundation, ATTN: Austin & Martha Reed and Harold & Dorothy Short Unrestricted Fund, PO Box 532, Clinton, IN 47842.*



Now is the perfect time to support the future of Vermillion County!

Thanks to the Lilly Endowment, Inc.'s Gift VIII Match Initiative, every donation made to a Vermillion County Unrestricted Fund through the Vermillion County Community Foundation will be matched \$2 for every \$1 you give—but only until December 31, 2025. That means a \$100 donation becomes \$300 to help fund projects in Vermillion County.

Unrestricted Funds are incredibly important. They allow the community to respond to the most pressing local needs, from education and health programs to parks and recreation, youth and senior initiatives, economic development, and more. These funds help make great things happen—now and for future generations.

Our goal is to raise \$375,000 by the deadline. Your gift, big or small, can make a lasting impact.

Whether you want to give to the Vermillion County Community Fund or start your own fund, we're here to help you make it happen.



Scan the QR code to give back!

Your donation stays local, supporting future community projects and grantmaking efforts in Vermillion County.

Planning for the Future:

What You Need to Know About Estate Planning

Ever wondered what happens to your stuff—like your money, house, or even your favorite baseball card collection—after you're gone? That's where *estate planning* comes in. It may sound like something only adults or super-rich people worry about, but it's really just a smart way for anyone to make sure their things go where they want them to.

Let's break it down into some simple questions and answers.

Q: What is estate planning, anyway?

A: Estate planning is all about making a plan for your money, your property, and your personal belongings—both now and in the future. It also lets you choose who should get what when you're no longer around. It's kind of like making a treasure map, but instead of finding gold, people find what you've left behind for them.

Q: What happens if someone doesn't make an estate plan?

A: If you don't make a plan, the government will decide for you. Sounds a little scary, right? Without your input, the state:

- Can't choose the right guardian for your kids.
- Doesn't know who needs help the most.
- Won't give anything to your favorite charity or friends outside the family.

So, it's way better to make your own plan!

Q: How do you even start an estate plan?

A: It all starts with the 4 P's:

1. **People** – Make a list of the people you care about and want to help. This could include family, friends, or even a favorite charity.
 2. **Property** – Write down what you own: money, a house, a car, jewelry, insurance policies, and so on.
 3. **Plans** – Think about how you want to share your things. Who needs what? What would make the biggest difference in their life?
 4. **Planners** – Talk to the experts who can help you get it all organized, like a lawyer, financial advisor, or accountant.
-

Q: Can I include donations to charities in my estate plan?

A: Yes, you can! You might want to help your church, school, or a cause you care about. You can do this after your family is taken care of. There are many ways to give, like:

- Leaving a gift in your will.
 - Donating from a retirement plan or life insurance.
 - Creating a trust that helps others even after you're gone.
-

Q: Can I make a gift while I'm still alive and get something back?

A: Absolutely! With certain types of gifts, you can:

- Get regular payments (kind of like a paycheck).
- Enjoy tax savings.
- Help your favorite cause at the same time.

These gifts are a smart way to do something kind for others and benefit yourself, too.

Why It Matters

You might not need an estate plan just yet—but it's never too early to understand how important it is. One day, you'll have things worth protecting and people or causes you care about. Having a plan in place helps make sure everything goes where you want it to.

When you're ready, there are professionals who can help you (and your family) build a plan that makes a difference.

Want to talk more about how giving can be part of your plan? We'd be happy to help you and your advisors create a legacy you can be proud of.

MEMORIAL GIVING

Memorial gifts provide a way for families and friends to remember their loved ones. *Honor gifts* are a way to celebrate a life, an anniversary, a birthday, or to simply say “thank you” for special things they have done for the donors or others.

We will acknowledge your gift to the appropriate family on the day it is received. The amount will not be mentioned. You will also receive an acknowledgment of your gift. We received the following Memorial and Tribute gifts from October 1, 2024, to March 31, 2025. The name of the person being memorialized or honored is in **bold**.

MEMORIALS

Cameron Cheuvront

Zeb & Cara Jumps
Dennis & Carla Naylor
Mark & April Switzer
Woodley Farra Manion

Phillip Chilton

David & Anita Osella

Stanley Clark

Dale & Valerie White

Carl & Delores Hicks

Trevor, Owen, Lynley, and
Ragan Hicks
Duane & Penny Snyder

Braeden Hollowell

Ty & Nikki Cheuvront
Dorothy Johnson

Rev. Jon Leon Myers

Mike & Mary Margaret Rhees

Carl Swinford

Steven & Christine Smith

Frederick Stephen Weir

Mark & April Switzer

Bill Werremeyer

Carolyn Longshore

Tony Wooster

Steve & Judi Paloncy

Yale Yager

Annie Baird
Lou & Carol Bonomo
Emily Burdick
Karen Carlson
Roger & Carol Defries
Bob & Julie Fischer
Wilma Flory
Glenna Gibbs
Janel Gick
Elizabeth Gorrell

John & Karen Harris

Richard & Patricia Heber
Steve & Sandra Kaufman
Barbara Kuykendall
Larry & Carol Lynn
Lois Myers
Ken & Diana Pierce
Mike & Mary Margaret Rhees
Ron & Joyce Short
Margaret Strobel
Dennis & Sue Weber
Dale & Valerie White
Shirley Wilcox
Carl & Jill Wright
Melanie Yager

Orthanna Yager

Swinford Farms, Inc.

IN HONOR OF

Mike & Mary Margaret Rhees

Eric & Christy Daniels



DONORS & CONTRIBUTORS

In partnership with our donors (individuals, businesses, corporations, churches, service organizations, and civic clubs), the Community Foundation awards several thousand dollars in grants each year to a broad range of charitable organizations in our community. This support is provided through a variety of endowment and pass-through funds including: arts, culture, historic preservation, faith, parks and recreation, land protection, education and scholarships, health and human services, children and youth, seniors, and more.

We received support from the following donors and contributors from October 1, 2024, to March 31, 2025.

Don & Marianna Anglin	Larry & Carol Lynn	Vickie Swinford
Lou & Sally Fenoglio	Richard A. & Sue A. Reed	Larry & Carol Williams
David Francis	Jean Rieches	Clinton Lions Club
Bill & Karen Hartman	Ed & Elizabeth Shew	Elanco Animal Health, Inc. & Subsidiaries
Bob & Ellen (Shew) Holland	David & Karen Smith	Estate of David Helt
Tom & Margi Knotts	Sharon Smith	Orion New Generation, LLC
Debbie Kuykendall	Doc & Brenda Sutherlin	Wabash River Run

Vermillion County Community Foundation truly appreciates every gift received from our generous donors. If we neglected to mention your contribution for the time period listed, please accept our sincere apologies for the oversight.

THE LEGACY SOCIETY

LEGACY GIFTS

We gratefully recognize the following individuals who have remembered the *Vermillion County Community Foundation* with a bequest from their estate or who have indicated that the Foundation has been named as a future beneficiary of their estate. The special community benefactors have enriched the lives of others through their concern for the charitable needs of the community. If you have included the Foundation in your estate plan, please consider becoming a member of our *Legacy Society*. We would sincerely appreciate the opportunity to pay tribute to your thoughtfulness.

- James Patrick (“Pat”) Aikman
- Raymond & Margaret Armstrong
- Marguerite Butts
- David Helt
- Marvin & Carol High
- Ron & Shirley Hinton
- Michael & Mary Margaret Rhees
- Jean Rieches
- Peter & Anne Yurchak

HOW CAN YOU BENEFIT?

It's easy to find out. Simply write, call, or email us and we'll be happy to answer any of your questions about the Charitable IRA Rollover, gifts of stock or life insurance, the Legacy Society, or other planned giving options.

HOW does the Vermillion County Community Foundation work?

It starts with
YOU
the donor



An individual, family, business or charitable organization makes a tax-deductible gift of cash, securities, real estate or other property.

With a
PASSION
for your community



Your gift creates or adds to a charitable fund to benefit causes important to you now or in the long term.



human/animal
welfare



education



human
services



environment

... any cause important to you which better our community

Whose **GIFTS**
are used



No gift is too small



- cash
- securities
- real assets
- retirement funds
- insurance
- bequests

To **CREATE & BUILD**
funds for the community



Funds are invested prudently for long term growth, overseen by an investment committee of local professionals.

DISTRIBUTIONS from the fund fulfills your charitable passions through grants to charitable organizations and/or scholarships

The nonprofit projects, organizations and student scholarships your fund supports strengthen community while creating your lasting legacy of giving.

ALL FUNDS are governed by an agreement between VCCF and the donor.

- unrestricted
- donor advised
- designated
- agency
- field of interest
- scholarships

The
VCCF
team



- Meets with donors to determine which type of fund is right for their goals
- Assists donors with giving complex gifts
- Helps donors grow funds
- Offers expertise on community needs
- Preserves donors wishes in perpetuity
- Provides regular statements on fund activity

GIVING OPPORTUNITIES

Vermillion County Community Foundation manages a variety of endowment and pass-through funds for the benefit of its citizens. Listed below are just a few of the nearly 350 funds under our management. To see a full listing visit our website at: www.wicf-inc.org.

MEMORIAL & TRIBUTES

A gift to any fund at the Foundation can be made in memory of someone or in honor of an achievement, a birthday, anniversary or accomplishment.

Online Donations

Your online donations through our website are a convenient, secure, and fast way to give.

Checks or Cash

Simply use the tear-off form on this page to make your donation to any of the funds below or to any of our other charitable funds with which you might be familiar.

COMMUNITY FUND

This is the largest grant-making fund at the Community Foundation. Grants are made from this fund to support worthwhile projects, programs, and nonprofit organizations. See pages 6-10 for a listing of grants made in the past few months.

SCHOLARSHIP FUNDS

Donations to these funds are invested and a portion of the earnings are used for awarding scholarships to students from North Vermillion and South Vermillion High Schools.



Simply scan the QR code to donate to a fund of your choice.

Phone: 765.832.8665

Fax: 765.832.6824

www.wicf-inc.org

vccf@wicf-inc.org



Facebook:
theVCCF



Instagram:
@vermillioncofcf



**VERMILLION COUNTY
COMMUNITY FOUNDATION**

Please send this form and your contribution to:

Vermillion County Community Foundation
P.O. Box 532
259 Vine St.
Clinton, IN 47842-0532

Name:

Address:

Email :

Preferred phone number: (____)_____

Enclosed is my contribution of:

- ☐ \$2,500 ☐ \$1,000 to establish a new named fund
☐ \$1,000
☐ \$500
☐ \$250
☐ \$100 ☐ Please contact me about making a gift of stock
☐ \$50
☐ \$25

\$_____ (other amount)

My contribution is to support projects for:

☐ Name of Fund or Field of Interest:

Gifts will be placed in an unrestricted fund unless otherwise noted.

My contribution is:

☐ in honor of (or) ☐ in memory of

(name)

Please Notify:

Name:

Address:

- ☐ I would like to receive more information about establishing a fund in my family's name.

Western Indiana
Community Foundation
PO Box 175
135 S. Stringtown Rd.
Covington, IN 47932-0175

Change Service Requested



VERMILLION COUNTY
COMMUNITY FOUNDATION

PO Box 532
259 Vine St.
Clinton, IN 47842-0532

Phone: 765.832.8665 | Fax: 765.832.6824
www.wicf-inc.org | vccf@wicf-inc.org



Federal Tax ID Number: 35-1814927

NONPROFIT
US POSTAGE PAID
INDIANAPOLIS IN
PERMIT NO. 9059